



## **Planning Commission WORKSHOP MEETING Agenda**

**April 20, 2026 at 6:30 PM**

**City Hall Council Chambers - 210 W. 6th Ave - Virtual**

The City of Kennewick broadcasts meetings on the City's website and Zoom. You can watch the broadcast or register to participate via Zoom on the Planning Commissions webpage at [www.go2kennewick.com/PlanningCommission](http://www.go2kennewick.com/PlanningCommission).

The public can also submit comments by either filling out an online form at [www.go2kennewick.com/PCPublicComment](http://www.go2kennewick.com/PCPublicComment), via e-mail to [cedinfo@ci.kennewick.wa.us](mailto:cedinfo@ci.kennewick.wa.us), or submitting written comments to Kennewick Planning Commission, P.O. Box 6108, Kennewick, WA 99336. Comments must be received no later than 4:00 p.m. on the day before the meeting.

---

### **1. CALL TO ORDER**

Roll Call/Pledge of Allegiance

### **2. COMPREHENSIVE PLAN PERIODIC UPDATE - TRANSPORTATION ELEMENT**

a. Comprehensive Plan Periodic Update: Transportation Element & Transportation System Plan

### **3. CITY COUNCIL ACTION UPDATES**

a. City Council Action Updates: Reports, Comments or Discussion of Commissioners & Staff

### **4. ADJOURNMENT**



# CITY OF KENNEWICK TRANSPORTATION SYSTEMS PLAN UPDATE

April 2026



# AGENDA

1. Project Overview & Key Updates
2. Multimodal System Plans
3. Levels of Service
4. Travel Forecasts
5. Project Needs
6. Next Steps & Questions

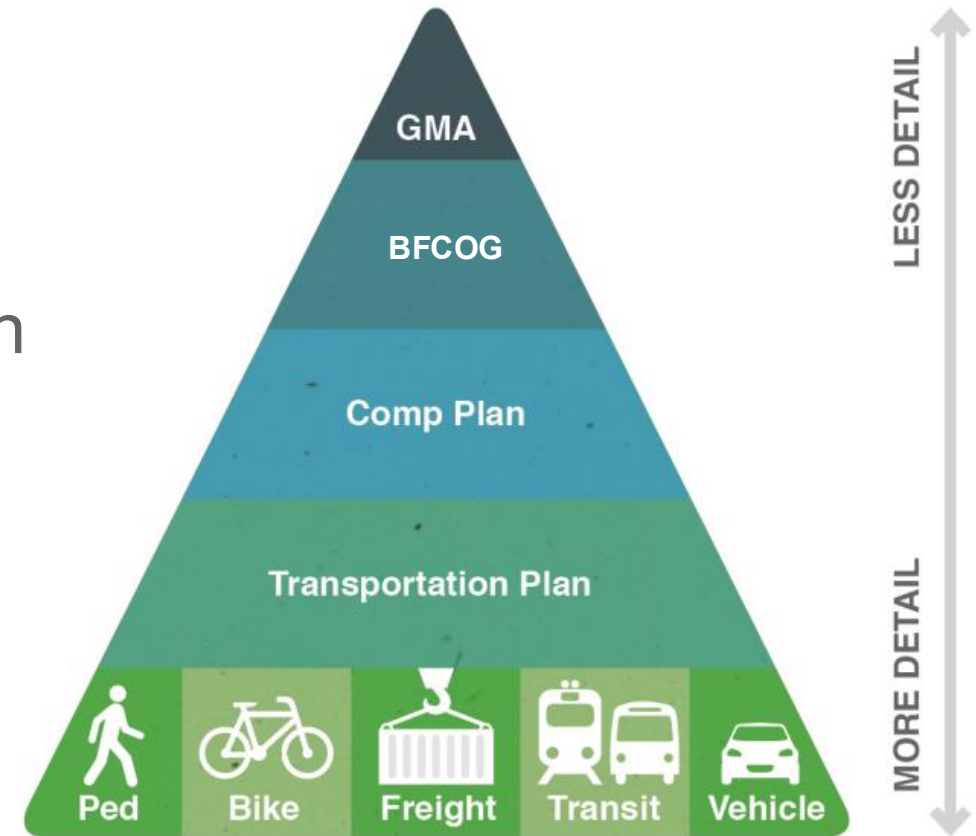


# PROJECT OVERVIEW

One of the key objectives of the TSP update is to align with the updated Comprehensive Plan

Key Touchpoints between the Comp Plan and TSP

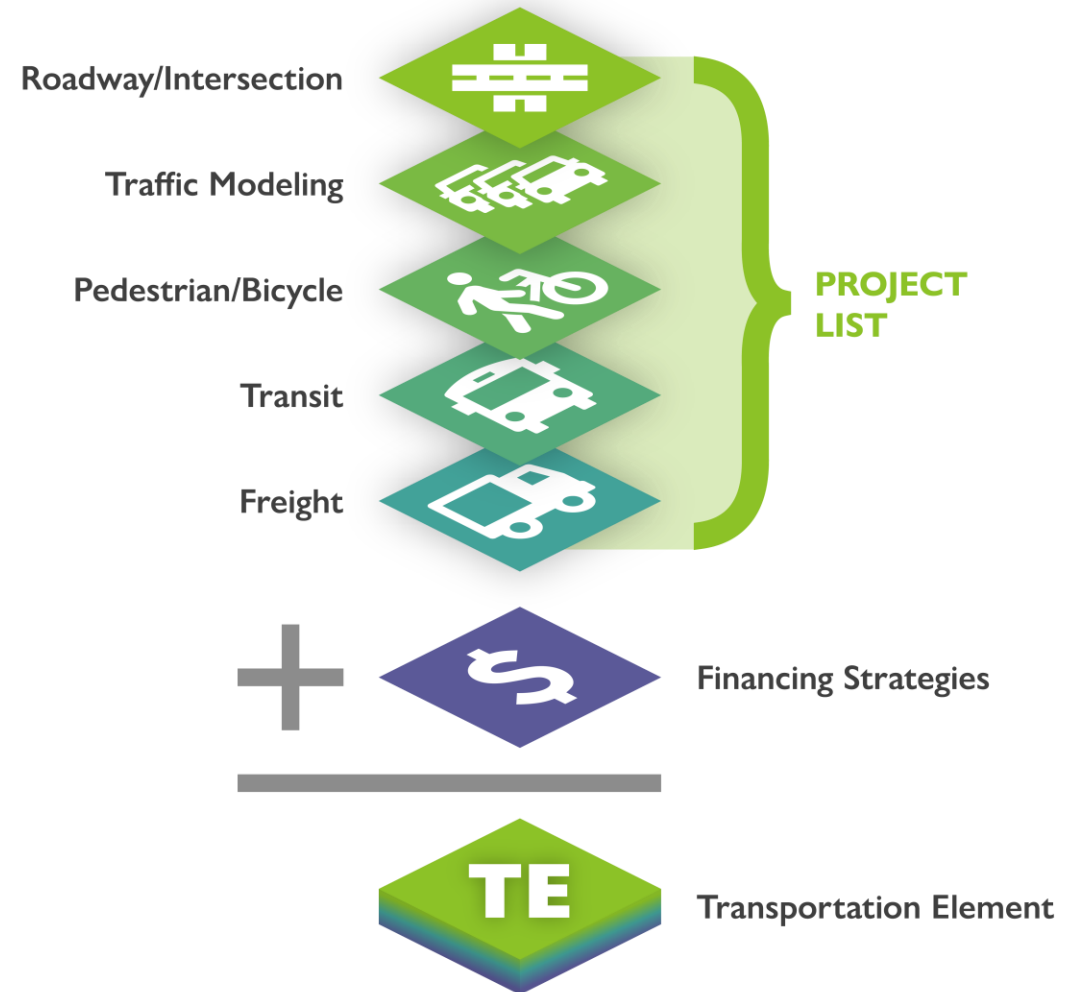
- Land Use
- Outreach & Public Engagement
- Goals & Policies
- Plan Adoption



# KEY PLAN UPDATES

## What's Different from the Existing Plan?

- Last updated in 2018
- Land use projections to 2046
- New multimodal LOS standards
- Updated
  - Goals & policies
  - System maps
  - Project list and costs
  - Funding strategies



# BALANCING THE PLAN

## MULTIMODAL IMPROVEMENTS

- Improve corridors
- Improve intersections
- Pedestrian, bicycle, transit
- Maintenance & preservation

## LEVELS OF SERVICE / CONCURRENCY

- Maintain LOS standards
- Measures adequacy of facilities/services
- Timing of facilities/services

## FINANCE

- Existing/historical transportation revenues
- Grants
- Impact fees



# SCHEDULE/PUBLIC OUTREACH

Spring 2025	<ul style="list-style-type: none"><li>Project Kick-off</li></ul>
April 2026	<ul style="list-style-type: none"><li>Planning Commission (TSP) April 20</li><li>City Council (TSP) April 28</li><li>Release Drafts of Comprehensive Plan &amp; TSP By end of April</li></ul>
May 2026	<ul style="list-style-type: none"><li>Public Open House on Comprehensive Plan &amp; TSP <b>Goal:</b> Share draft plans and gather feedback</li></ul>
July 2026	<ul style="list-style-type: none"><li>Release 2<sup>nd</sup> Drafts of Comprehensive Plan &amp; TSP Mid-July</li></ul>
August/September 2026	<ul style="list-style-type: none"><li>Planning Commission &amp; City Council Work Sessions</li></ul>



# KEY PLAN COMPONENTS

## Modal Systems



**Street System**



**Pedestrian System**



**Bicycle System**



**Transit System**



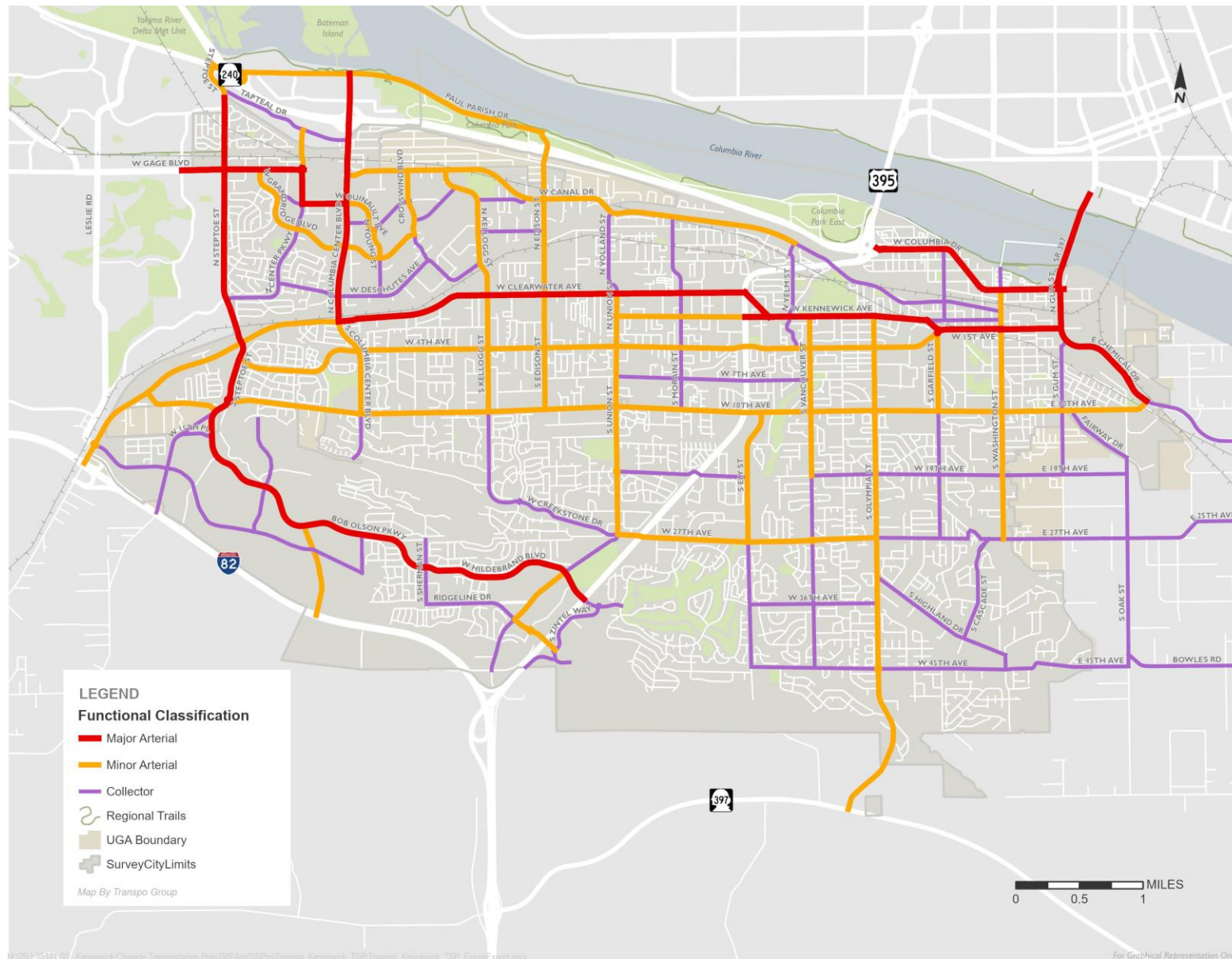
**Freight, Air,  
& Water**

**System maps illustrate the “vision” for each mode**



# FUNCTIONAL CLASSIFICATION

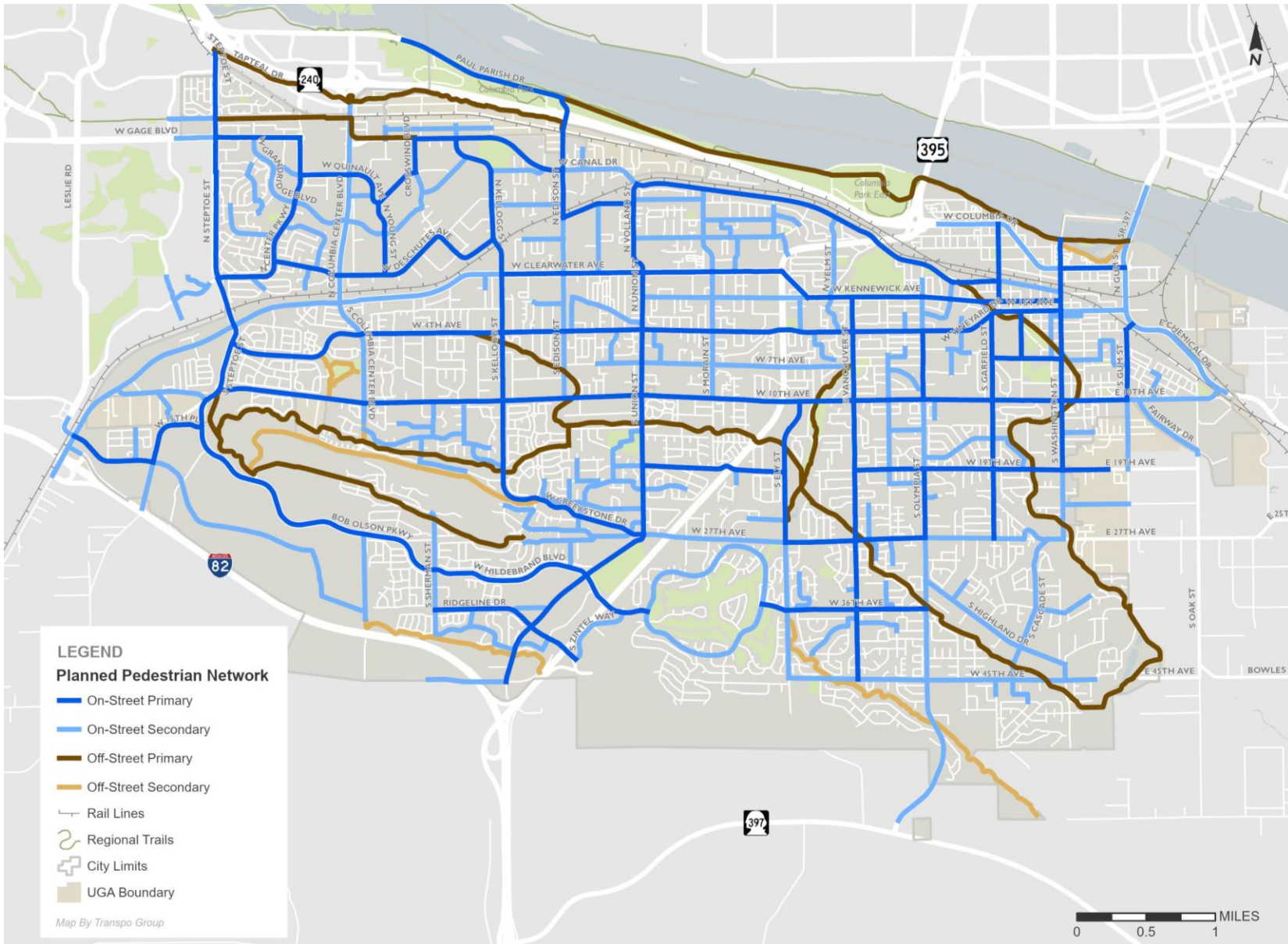
- Identifies the hierarchy of streets
- Balances mobility versus local access
- Ensures roadways are built and maintained based on their desired function





# PEDESTRIAN SYSTEM

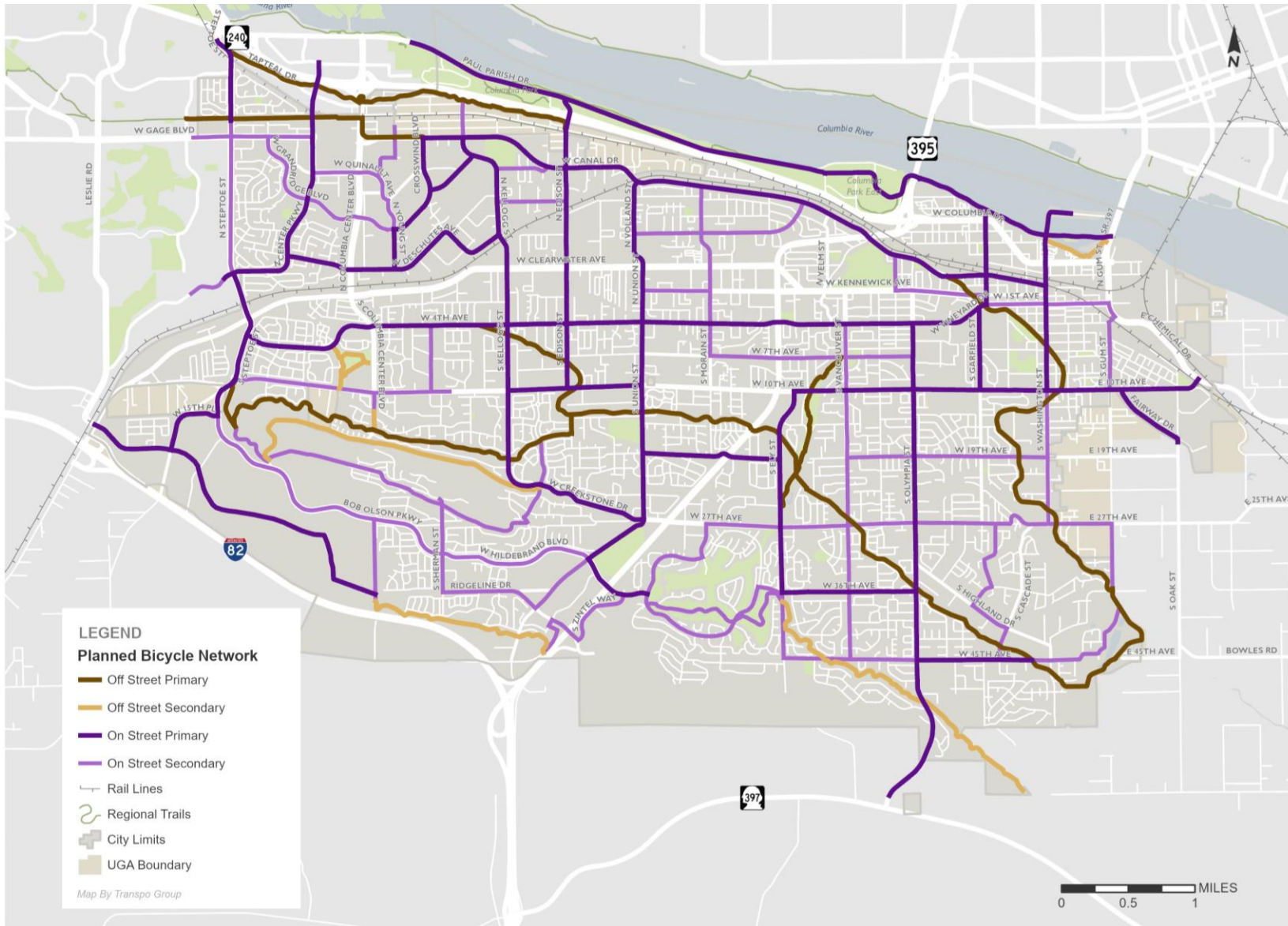
- Indicates routes to build and maintain safe and comfortable pedestrian facilities
- Key input into the multimodal LOS standards
- Primary: highest priority for a connected sidewalk and trail network
- Secondary: other key routes that should have basic facilities





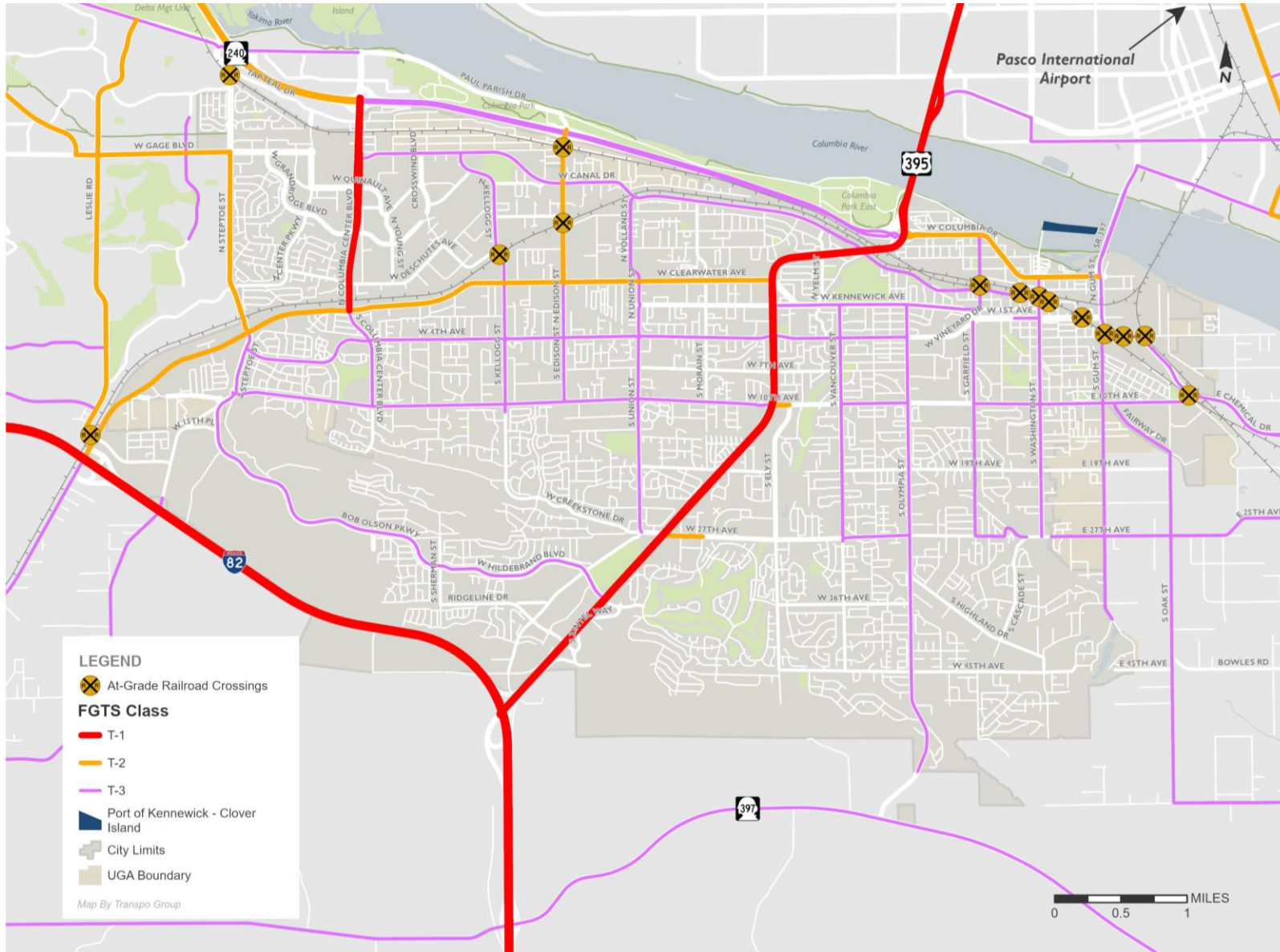
# BICYCLE SYSTEM

- Indicates routes to build and maintain safe and comfortable bicycle facilities
- Key input into the multimodal LOS standards
- Primary: highest priority for a connected bicycle facility network
- Secondary: other key routes that should have basic facilities





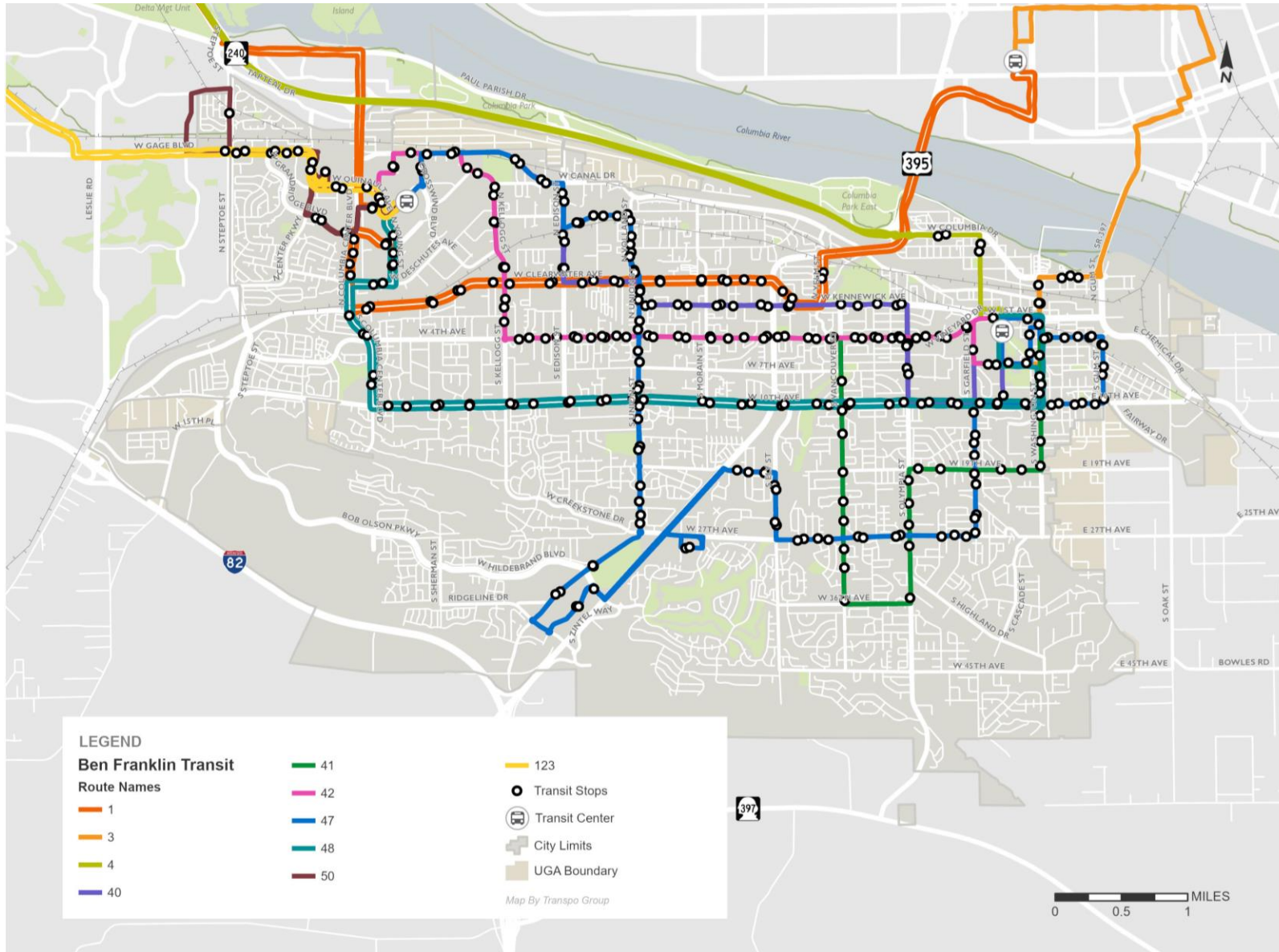
# FREIGHT, AIR & WATER SYSTEM



- Indicates major roadways serving trucks
- Identifies railroads and at-grade crossings
- Notes other intermodal facilities



# Transit System

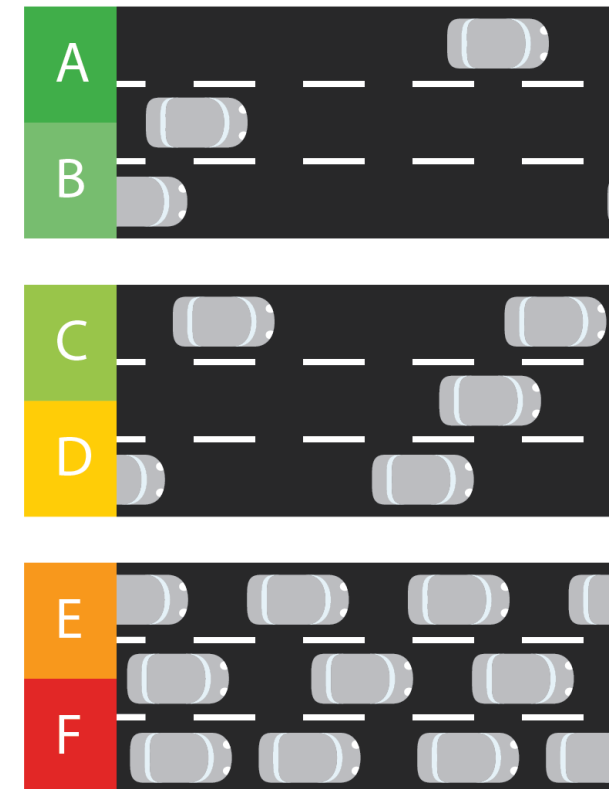


- Indicates bus stops and bus routes
- Identifies major transit centers
- Shows connections outside of Kennewick

# LEVELS OF SERVICE

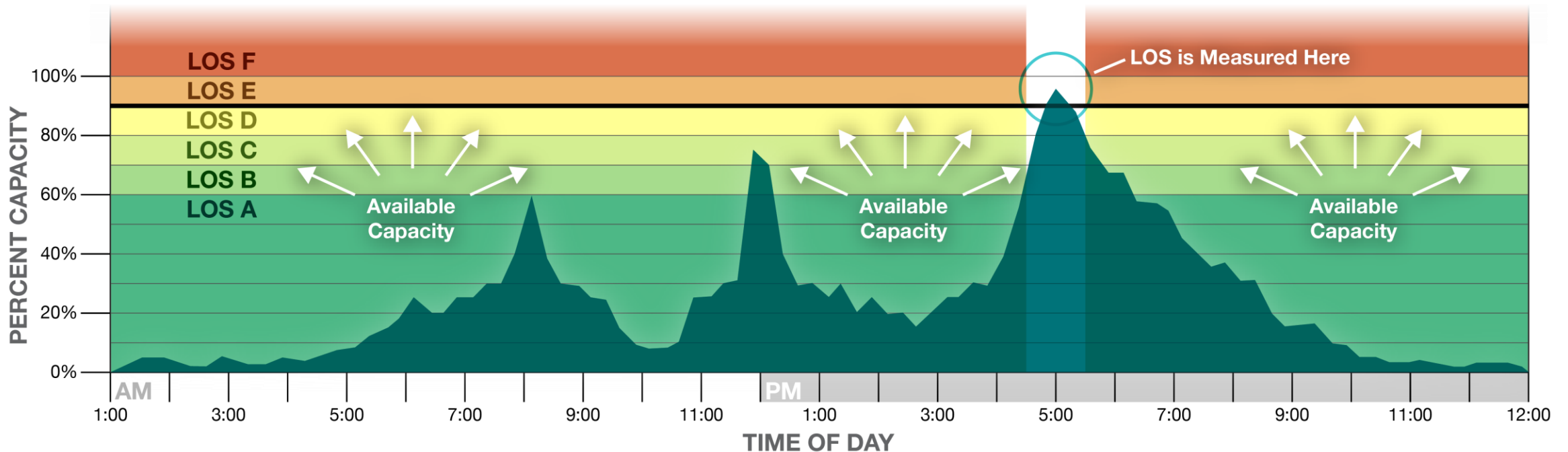
- What are Levels of Service?
  - Level of Service (LOS) measures the performance of the transportation system
  - Could be measured by level of congestion, travel speeds, and/or comfort and convenience
  - LOS standards for City roads and trails are set by the City
  - WSDOT sets LOS standards for state highways

## Example Vehicle LOS Illustration



# VEHICLE LEVELS OF SERVICE

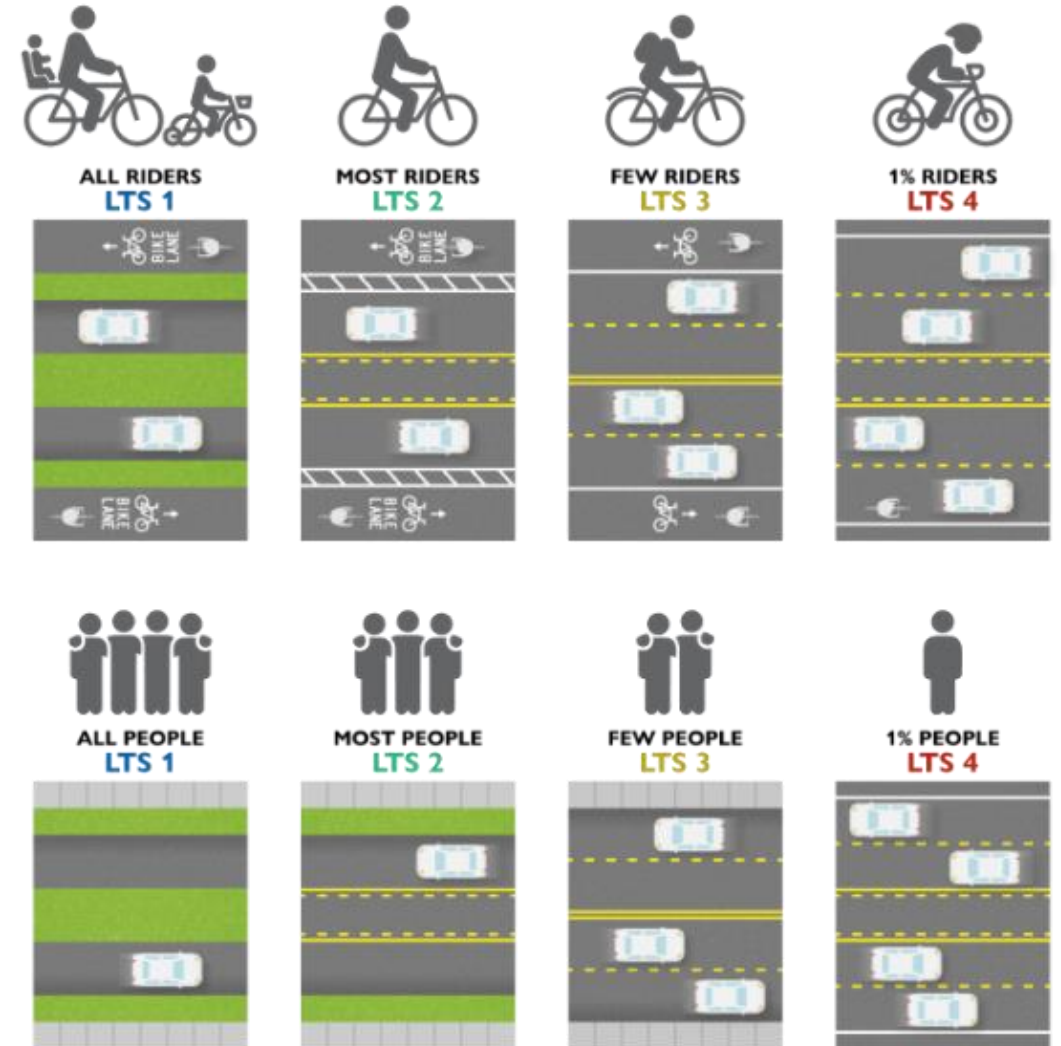
- How does Kennewick measure vehicle LOS?
  - Based on the PM peak hour – worst hour of the day



# PEDESTRIAN/BICYCLE LOS

## Level of Traffic Stress

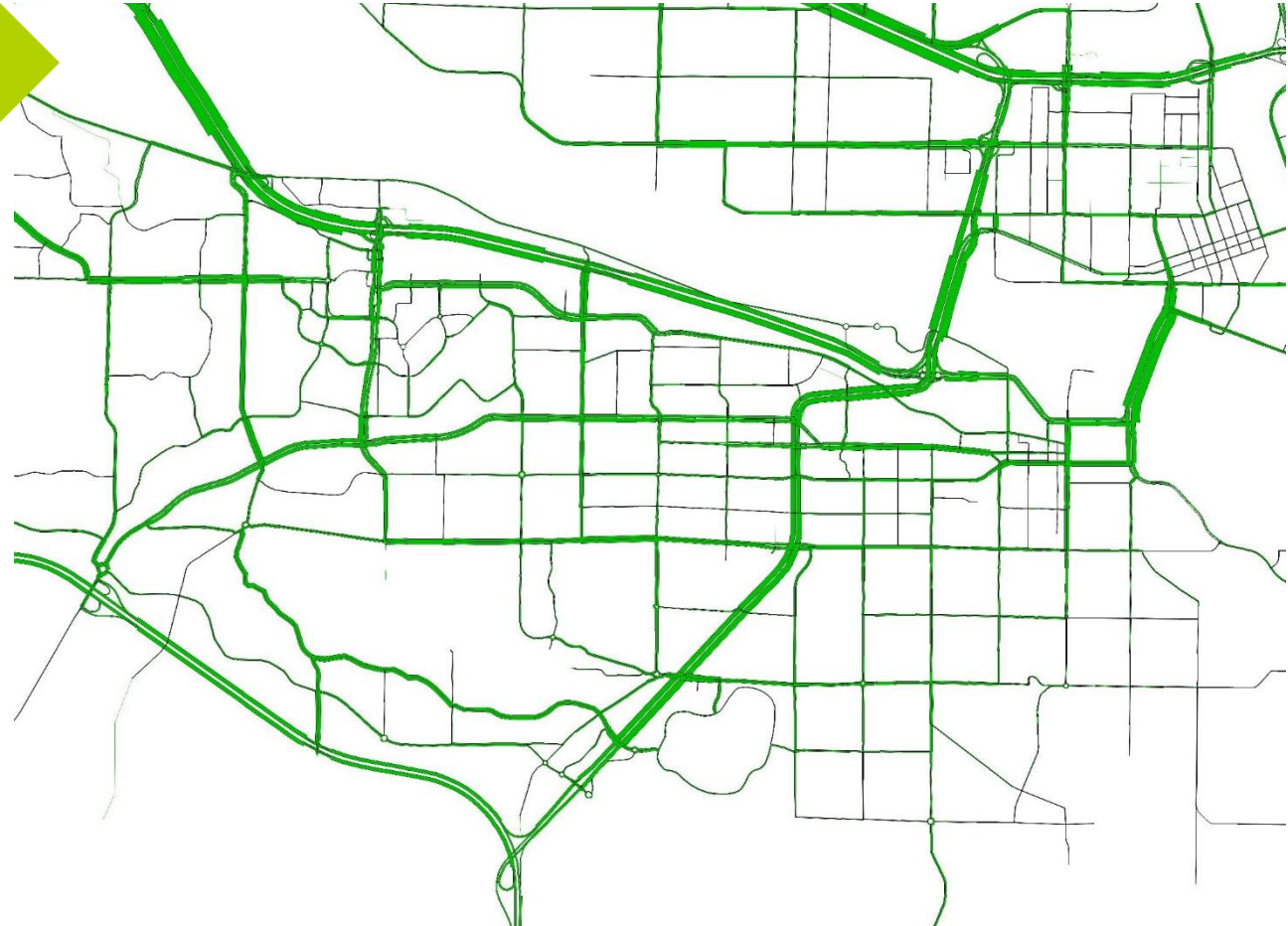
- Measures the comfort level of a pedestrian or bicycle facility
- Rated on a scale similar to LOS
  - **LTS 1** (suitable for low confidence users)
  - **LTS 2** (accommodates most users)
  - **LTS 3** (suitable for confident users)
  - **LTS 4** (not suitable for most users)



# TRAVEL FORECASTS

## Development of 2046 Traffic Volumes

- Based on BFCOG Regional Travel Demand Model
  - Includes regional and local land use
  - Includes planned transportation improvement projects

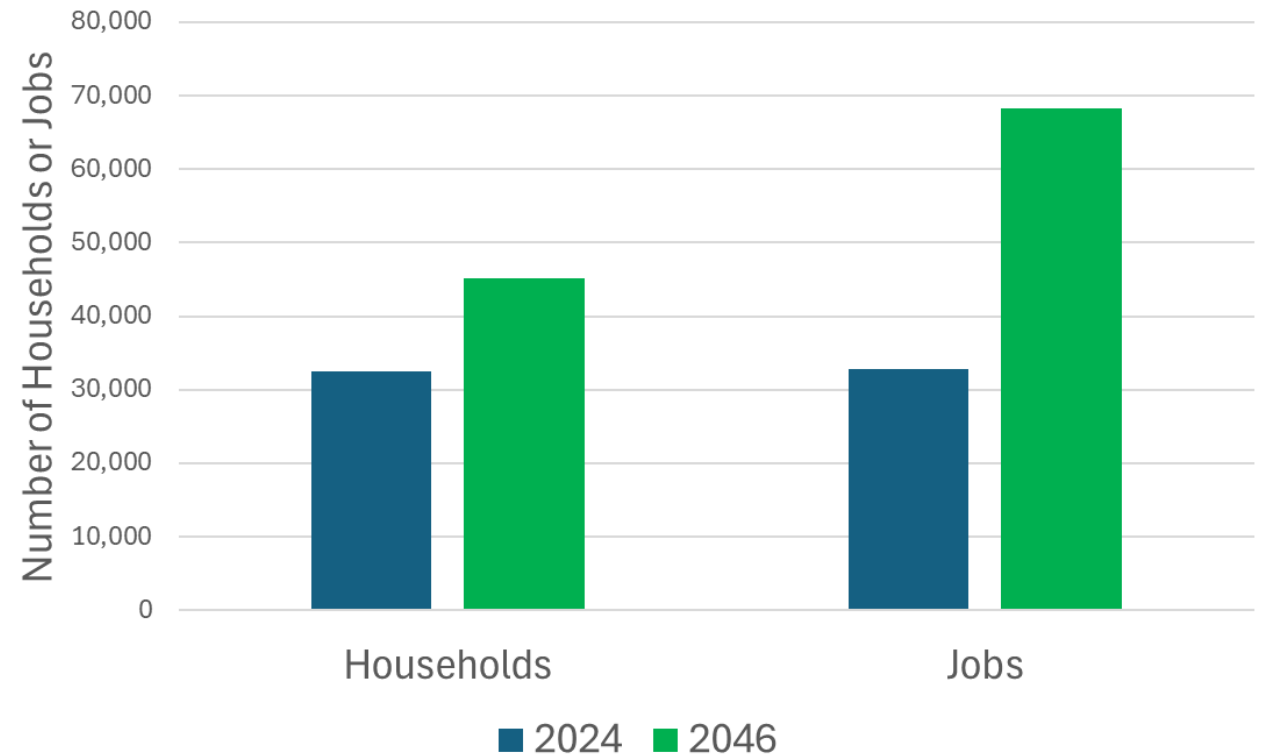


*Example: BFCOG Regional Travel Model with Improvements*

# TRAVEL FORECASTS

## Land Use Forecasts

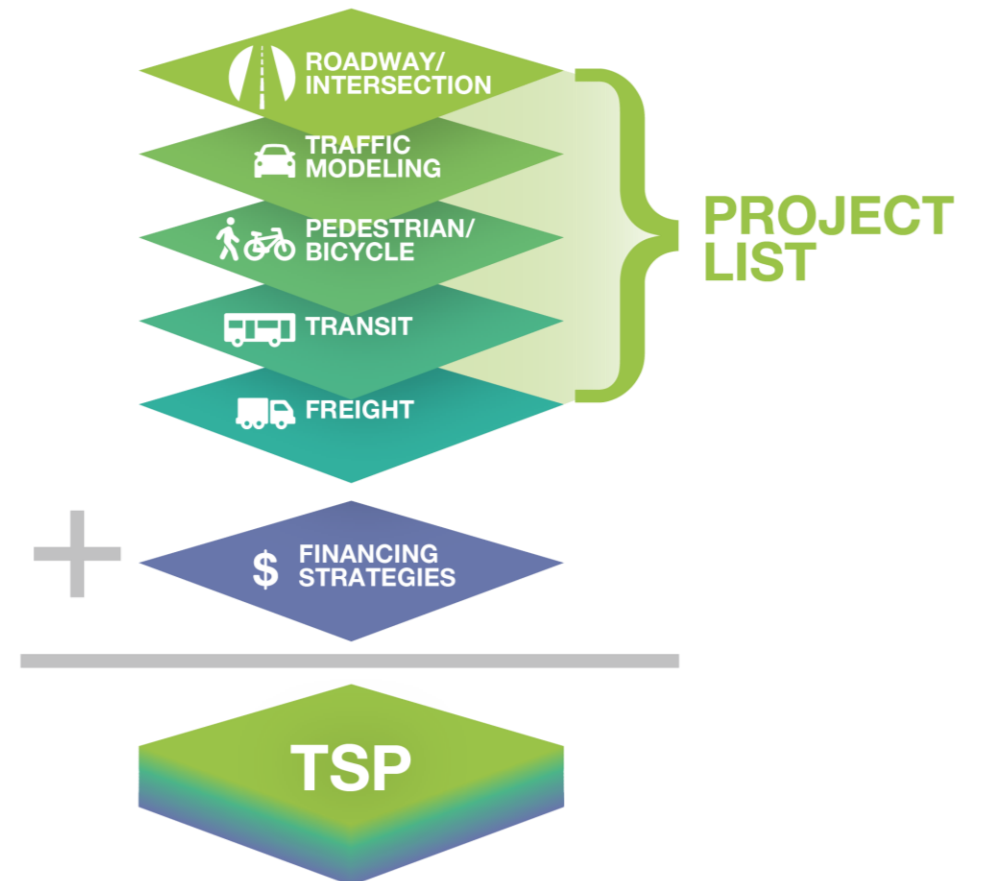
- Estimated Household Growth
  - 2024 to 2046
  - 1.5% Annual Rate
- Estimated Job Growth
  - 2024 to 2046
  - 3.4% Annual Rate
- Utilized to Prepare Travel Forecasts



# PROJECT LIST

## Categorized by Project Type

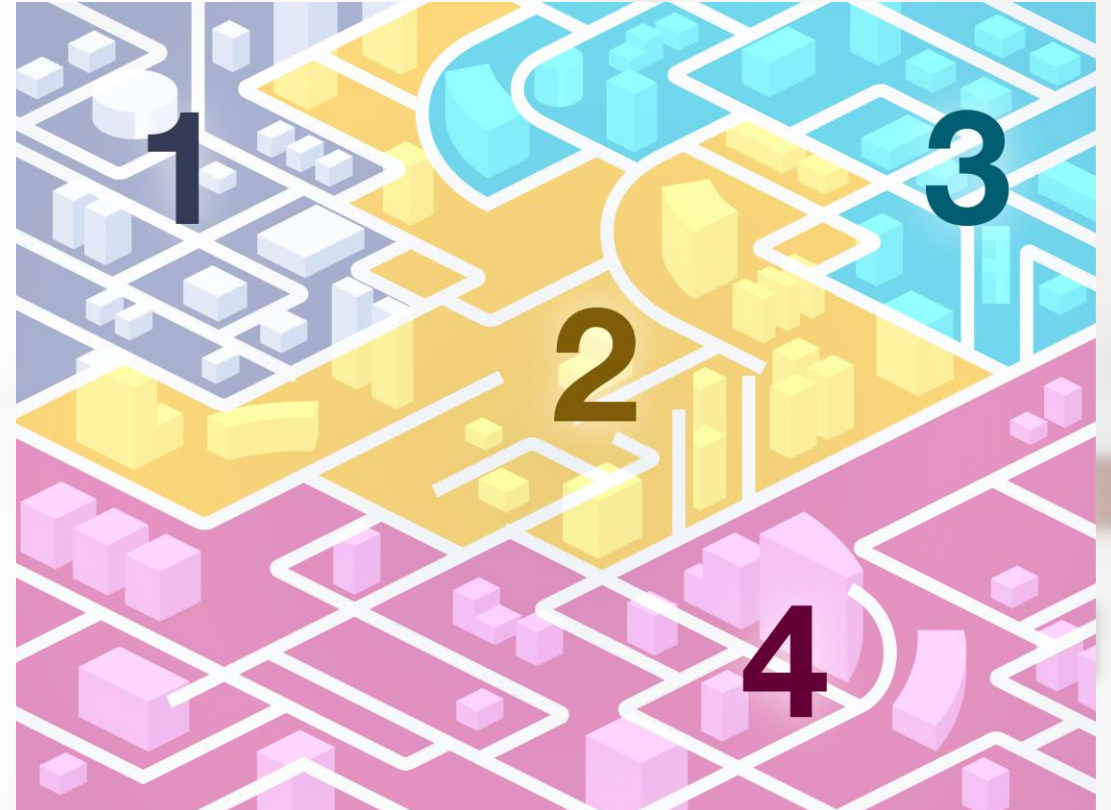
- New Street Construction
- Reconstruction/Widening
- Intersection
- Pedestrian/Bicycle
- Annual Program
- Study
- Monitoring/Operations
- Other Agency



# NEXT STEPS

## Draft TSP Document

- Develop Project Cost Estimates
- Complete Financing Strategy
- Address and Incorporate Commission, Council and Public Comments
- Prepare Final TSP Document



QUESTIONS?